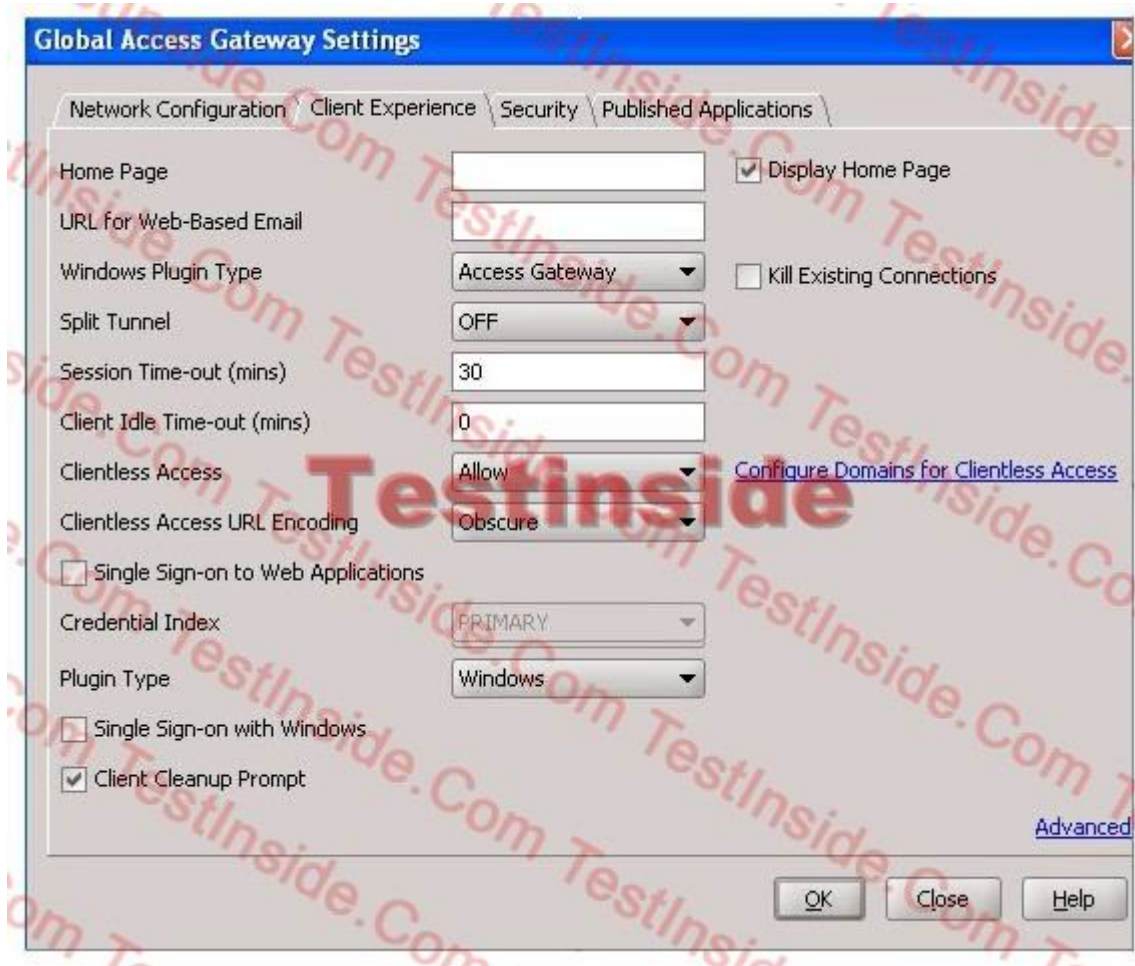


Exam : [Citrix 1Y0-A13](#)

Title : **Implementing Citrix Access
Gateway 9.0, Enterprise
Edition**

Version : **Demo**

1. A system administrator has been asked to configure Access Gateway 9.0, Enterprise Edition so that users are NOT presented with the choices page and can only connect clientlessly. The administrator has decided to perform this configuration at the global level. What should be set under the Client Experience tab?



- A. Clientless Access to On
- B. Plugin Type to Windows
- C. Clientless Access URL Encoding to Clear
- D. Windows Plugin Type to Access Gateway

Answer: A

2. An administrator wants users to be able to access resources running on file servers and application servers in an environment. The administrator has deployed Access Gateway 9.0, Enterprise Edition. The Citrix Access Gateway Plugin for Windows is used to establish connections to the corporate network. There are no intranet applications configured in this environment and split tunneling is turned off. The default

authorization policy is set to "Deny."

Users in this environment will be able to access applications on file and application servers as long as _____. (Choose the correct phrase to complete the sentence.)

- A. users are assigned specific intranet IP addresses
- B. an authorization policy is configured to grant them access
- C. internal resources are assigned specific intranet IP addresses
- D. internal resources in this environment are configured as published applications

Answer: B

3. An Access Gateway virtual server is configured with the following three settings:

ICA Proxy is set to ON

Web Interface address is set to "http://10.102.32.201:80/Citrix/AccessPlatform"

Clientless Access is set to ON

Client Choices is enabled

Which client choice(s) will be available to a user logging in from a client device running a Windows operating system?

- A. Web Interface only
- B. Clientless Access only
- C. Web Interface and Clientless Access
- D. Access Gateway Plugin for Windows, Web Interface and Clientless Access

Answer: C

4. A system administrator created a new virtual server, "admin.widget.com", on an Access Gateway appliance. Only system administrators will be connecting to this virtual server. These system administrators require a full SSL VPN tunnel when connecting. Other users connect to another virtual server, "users.widget.com", which runs on the same Access Gateway appliance. Any user connecting through "users.widget.com" currently connects clientlessly. Which action must the administrator take to give the system administrators full VPN access?

- A. Edit the virtual server corresponding to admin.widget.com and enable the Citrix Access Gateway Plugin for ActiveX

- B. Create a session policy, set Clientless Access to Off in the profile associated with the policy and apply the policy to users.widget.com
- C. Create a session policy, set Clientless Access to Off in the profile associated with the policy and apply the policy to admin.widget.com
- D. Create a session policy, select Citrix Access Gateway Plugin for Windows as the "Windows PluginType" in the profile associated with the policy and apply the policy to admin.widget.com

Answer: D

5. The Citrix Access Gateway Plugin for Windows needs administrative privileges _____ and _____ on a Windows XP device. (Choose the two correct phrases to complete the sentence.)
- A. for installation
 - B. for upgrading or downgrading of the system
 - C. for Endpoint Analysis checks that require administrative privileges
 - D. for those rare situations where it will be used as an antivirus application

Answer: AC

6. An administrator wants to provide access to published applications hosted on XenApp servers only, without requiring the use of a Citrix Access Gateway Plugin for Windows. Which feature should the administrator enable in order to meet the needs of this environment?
- A. ICA proxy
 - B. Single sign-on
 - C. SmartAccess with ICA proxy
 - D. Session Reliability on Web Interface

Answer: A

7. The wireless network in an environment is NOT secure, so users connecting over it need to log on to Access Gateway in order to access resources in the corporate intranet. The users in this environment are running Windows XP on their client devices and management has instructed the IT team to ensure that users are logged on automatically to Access Gateway using the Windows credentials they used to log on to their client devices. Which Access Gateway Plugin type should the IT team implement in this environment?

- A. Clientless Access
- B. Citrix Access Gateway Plugin for Java
- C. Citrix Access Gateway Plugin for ActiveX
- D. Citrix Access Gateway Plugin for Windows

Answer: D

8. A network administrator created multiple personal folder files (*.pst) on a workstation while accessing Outlook over a VPN session. The administrator would like for the *.pst files to be deleted upon logout from the VPN session. The administrator should configure the client cleanup to clean up _____. (Choose the correct option to complete the sentence.)

- A. cookies
- B. *.pst files
- C. address bars
- D. application data

Answer: D

9. An Access Gateway virtual server is configured with the following settings:

A group named QUARGRP

A session profile named QUARPROF, with Clientless Access mode set to ON

A session policy named QUARPOL, with the expression, "NS_TRUE" and the profile QUARPROF

The QUARPOL session policy is bound to the QUARGRP group

The global settings with Client Security is set to "CLIENT.APP.AV == SYMANTEC EXISTS" and the quarantine group is set to QUARGRP

Which client will be provided to a user who logs on to the virtual server from a client device that is NOT running Symantec Antivirus?

- A. Web Interface
- B. Clientless Access
- C. Citrix Access Gateway Plugin for Java
- D. Citrix Access Gateway Plugin for Windows

Answer: B

10. A network administrator is instructed to perform client-side cleanup before every session over the Citrix Access Gateway Plugin for Windows through the Access Gateway appliance. What is true about client-side cleanup?

- A. Client-side cleanup clears the history of the browser.
- B. Client-side cleanup cleans up data regularly during the session.
- C. Client-side cleanup will delete all Internet Explorer temporary files.
- D. Client-side cleanup will NOT clean up any data before the session starts.

Answer: D