

**Exam** : [Cisco 642-825](#)

**Title** : **Implementing Secure  
Converged Wide Area  
Networks**

**Version** : **Demo**

1. Refer to the exhibit. On the basis of the partial configuration, which two statements are true? (Choose two.)

```
RTA# show running-config
<Output Omitted>
!
interface FastEthernet0/0
 description $FW_OUTSIDE$
 ip address 64.202.2.6 255.255.255.252
 ip access-group 101 in
 ip verify unicast reverse-path
 ip inspect SDM_LOW out
 duplex auto
 speed auto
!
interface FastEthernet0/1
 description $FW_INSIDE$
 ip address 192.168.2.10 255.255.255.0
 ip access-group 100 in
 ip inspect SDM_LOW in
 duplex auto
 speed auto
!
<Output Omitted>
```

- A. A CBAC inspection rule is configured on router RTA.
- B. A named ACL called SDM\_LOW is configured on router RTA.
- C. A QoS policy has been applied on interfaces Serial 0/0 and FastEthernet 0/1.
- D. Interface Fa0/0 should be the inside interface and interface Fa0/1 should be the outside interface.
- E. On interface Fa0/0, the ip inspect statement should be incoming.
- F. The interface commands ip inspect SDM\_LOW in allow CBAC to monitor multiple protocols.

**Answer: AF**

2. Refer to the exhibit. Which two statements about the SDF Locations window of the IPS Rule wizard are true? (Choose two.)



- A. An HTTP SDF file location can be specified by clicking the Add button.
- B. If all specified SDF locations fail to load, the signature file that is named default.sdf will be loaded.
- C. The Autosave feature automatically saves the SDF alarms if the router crashes.
- D. The Autosave feature is automatically enabled for the default built-in signature file.
- E. The name of the built-in signature file is default.sdf.
- F. The Use Built-In Signatures (as backup) check box is selected by default.

**Answer: AF**

3. Refer to the exhibit. Which two statements about the AAA configuration are true? (Choose two.)

```

aaa new-model
username Bob password itsasecret
aaa authentication enable default group tacacs+ none

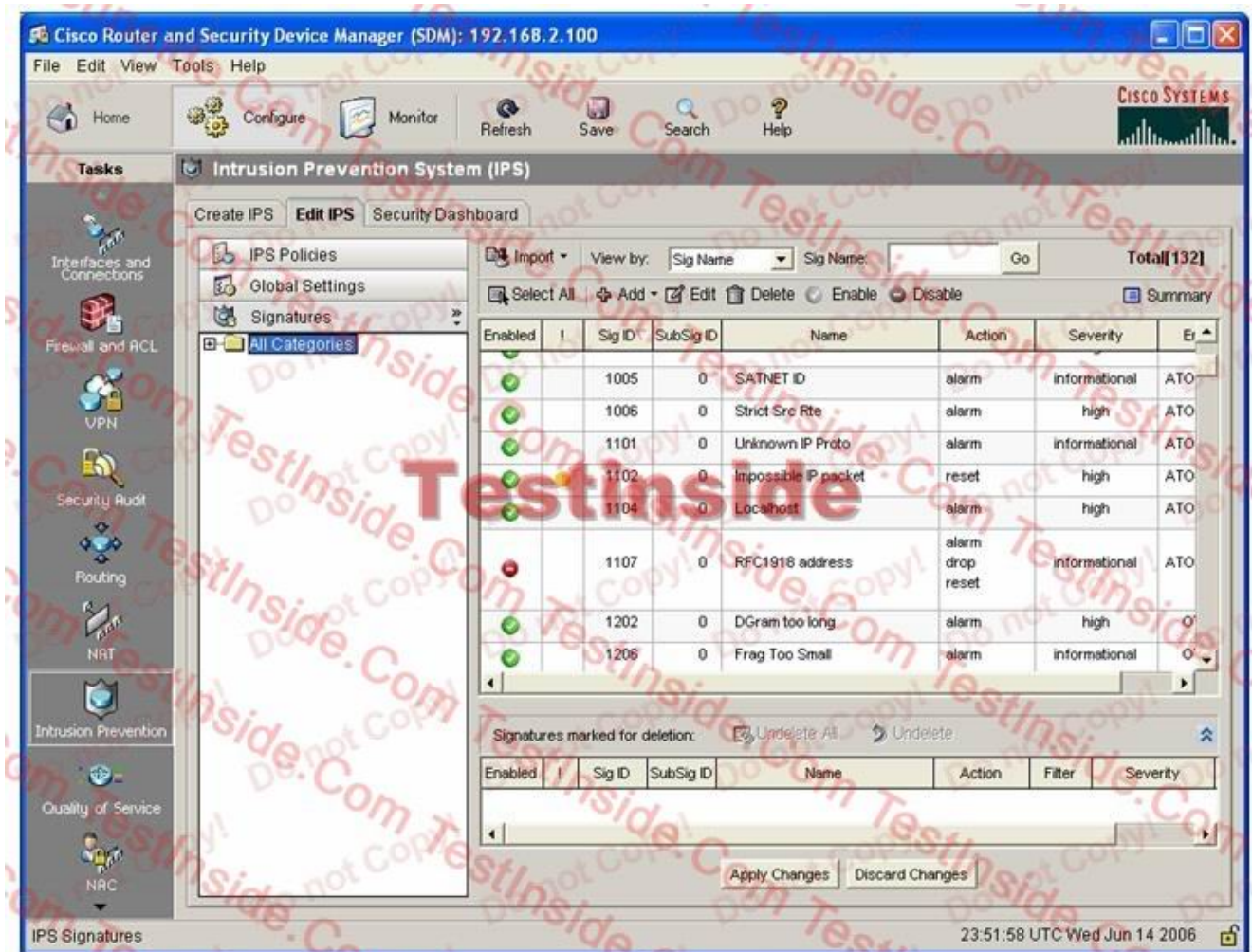
```

- A. A good security practice is to have the none parameter configured as the final method used to ensure that no other authentication method will be used.
- B. If a TACACS+ server is not available, then a user connecting via the console port would not be able to gain access since no other authentication method has been defined.

- C. If a TACACS+ server is not available, then the user Bob could be able to enter privileged mode as long as the proper enable password is entered.
- D. The aaa new-model command forces the router to override every other authentication method previously configured for the router lines.
- E. To increase security, group radius should be used instead of group tacacs+.
- F. Two authentication options are prescribed by the displayed aaa authentication command.

**Answer: DF**

4. Refer to the exhibit. On the basis of the information in the exhibit, which two statements are true? (Choose two.)



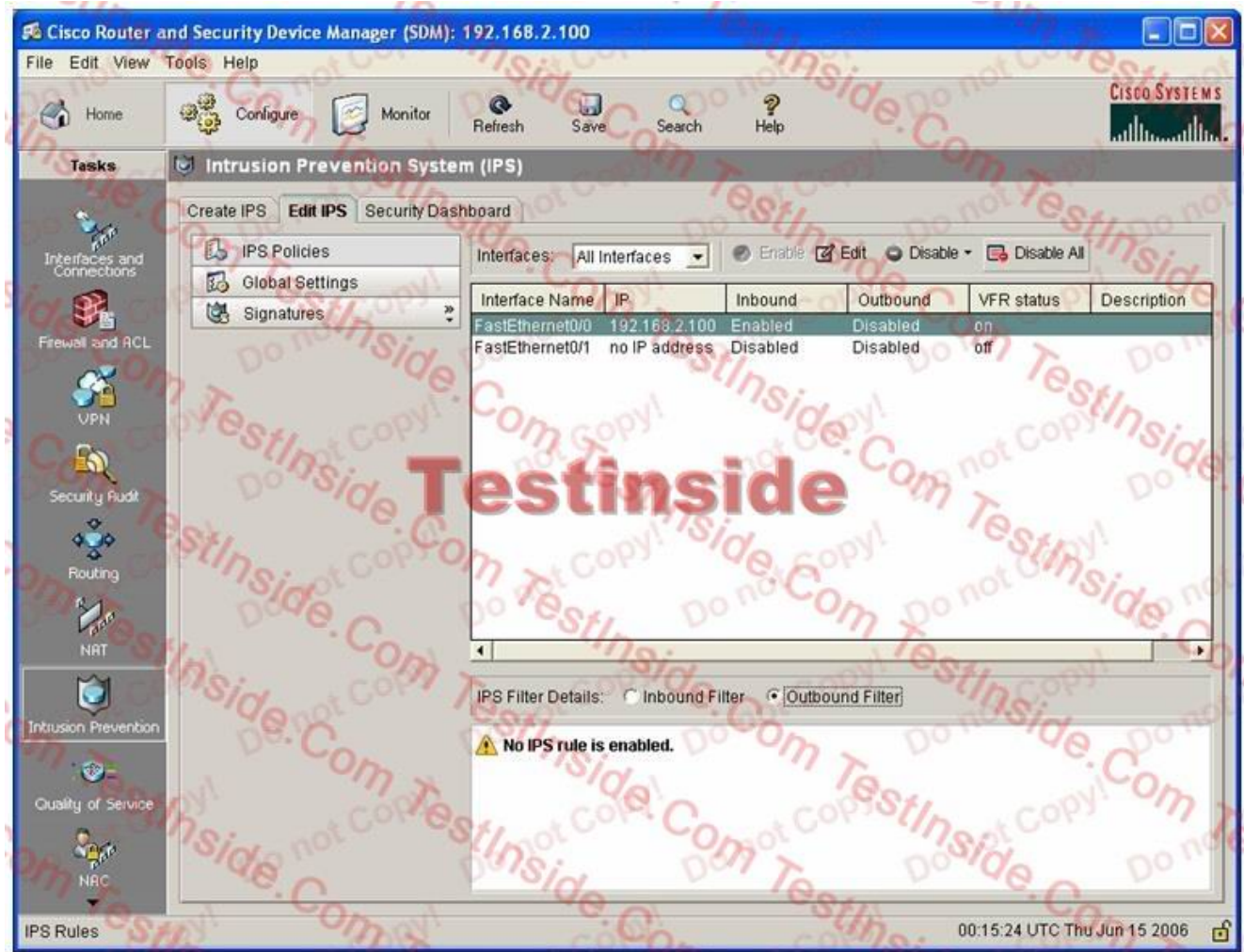
- A. Any traffic matching signature 1107 will generate an alarm, reset the connection, and be dropped.
- B. Signature 1102 has been modified, but the changes have not been applied to the router.
- C. Signature 1102 has been triggered because of matching traffic.
- D. The Edit IPS window is currently displaying the Global Settings information.

E. The Edit IPS window is currently displaying the signatures in Details view.

F. The Edit IPS window is currently displaying the signatures in Summary view.

**Answer: BE**

5. Refer to the exhibit. On the basis of the information that is provided, which two statements are true?  
(Choose two.)



A. An IPS policy can be edited by choosing the Edit button.

B. Right-clicking on an interface will display a shortcut menu with options to edit an action or to set severity levels.

C. The Edit IPS window is currently in Global Settings view.

D. The Edit IPS window is currently in IPS Policies view.

E. The Edit IPS window is currently in Signatures view.

F. To enable an IPS policy on an interface, click on the interface and deselect Disable.

**Answer: AD**